

CANYON RANCH

MALIBU

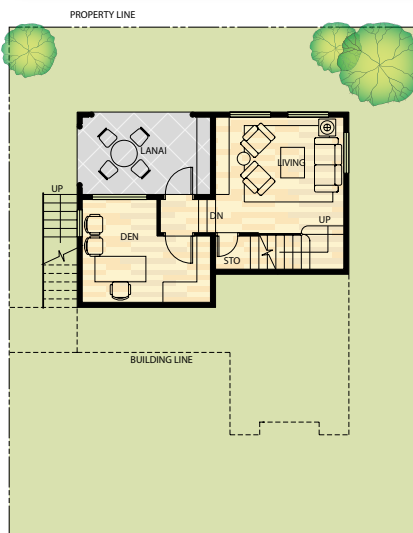
DOWNHILL

3 BEDROOMS • 3 T&B • PORCH
WALK-IN CLOSET • 2 BALCONIES

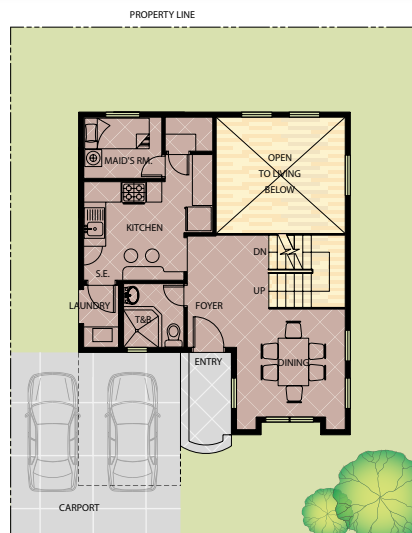


Spacious at 162 sqm, the Malibu rests on a prime location at the Ridge and offers unobstructed views of The Club, MJC racetrack, Mt. Makiling, and Laguna de Bay. Split-level design of its uphill and downhill units allows maximum light and cross-ventilation, further enhanced by double-height living room space. Adding to the feel and appeal of luxury are the bathrooms, roomy enough to accommodate a Jacuzzi—an opulence further sweetened by a walk-in closet in the Master bedroom.

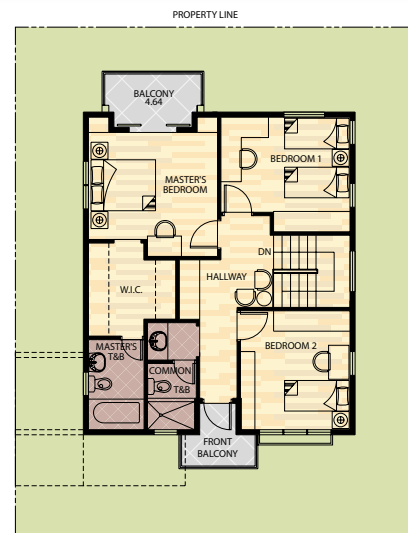
Indoor Areas	(Square Meters)	(Square Feet)
Lower Ground Floor		
Den	11.50	123.78
Living Area	16.11	173.41
Stairs (aux)	5.05	54.36
Upper Ground Floor		
Dining Area	12.38	133.26
Kitchen	12.13	130.57
Maid's Room	5.00	53.82
Storage	1.80	19.38
Foyer	7.08	76.21
Common T&B	4.10	44.13
Main Stairs	2.61	28.09
Second Floor		
Masters' Bedroom	15.25	164.15
Bedroom 1	13.41	144.34
Bedroom 2	12.74	137.13
WIC provision	6.97	75.02
Masters' T&B	5.24	56.40
Common T&B	5.20	55.97
Hallway	9.72	104.63
Total Indoor Areas	146.29	1,574.65
Outdoor Areas		
Porch	3.64	39.18
Carport	27.13	292.02
Lanai	9.00	96.88
Front Balcony	3.00	32.29
Rear Balcony	4.50	48.44
Total Outdoor Areas	47.27	508.81
Gross Area	193.56	2,083.46
Saleable Area	162.00	1,743.75



LIVING ROOM LEVEL



GROUND FLOOR



SECOND FLOOR

NOTE: ALL ITEMS ARE SUBJECT TO CHANGE WITHOUT PRIOR NOTICE